

SPECIFICATION

SLIT ILLUMINATION

Slit Length (mm)	0.3~14
Slit Width (mm)	0~12 continuous
Slit Projection	1x
Aperture Diaphragms	12.5x
Filters	Cobalt Blue, Red-Free, Grey, Heat Absorption and Yellow
Slit Rotation	0°~180° continuous
Angle of Incidence	0°, 5°, 10°, 15°, 20°
Patient's Eye/Prism	80mm
Surface Working Distance	

BASE

Vertical Movement	28 mm
Longitudinal Movement	78 mm
Lateral Movement	98 mm
Fine Base	10 mm
Power Supply	Free Voltage 100~240V AC
Voltage Frequency	50/60Hz
Power Consumption	70VA
Instrument Voltage	12V DC
Halogen Bulb	12V/30W
Fixation Point Bulb	3.4V/20mA

DIGITAL CAMERA

Image Camera	1/2" Interline CCD
Image Size	upto 10 MP and 18 MP in case of Canon DSLR
Cell Size	4.65µm X 4.65µm
Frame Rate	15fps, 7.5fps and 3.75 fps
Lens Mount	C- Mount
Photographing	Using Joy-stick or Software trigger.

RECOMMENDED COMPUTER SYSTEM

CPU	P 5, P7
Memory	512MB (over 1GB recommended)
Video Card	ATI Radeon 9200 (128MB) or similar
System	Windows 8/10, 64 bit/32 bit USB 3.0 Port
Transmit Method	USB 3.0 Port

Monitor	LCD or CRT (minimum resolution 1,280 x 1,024 pixels, over 1,600 x 1,200 pixels recommended)
---------	---

OPTION : PC, Table / COLOR : Dark Grey, Light Grey
Designs and details can be changed without prior notice for the purposes of improvement.

Measuring Force	Generated by leverage weight
Installation	Mountable on peg on the microscope
Measuring range	3-75 mm of Hg
Measurement divergence	of the force on prism from 0-58.84mN
Standard Divergence	0.49mN
Power consumption	DC3V
Net Weight	0.50 kg without accessories and batteries

MICROSCOPE

Microscope	HS 5000 5x or 3x
Type	Galilean Converging Binocular
Magnification	3 step or 5 step options
Total Magnification	3 step - 10x, 16x and 25 x 5 step - 6x, 10x, 16x, 25x and 40x
Eye-piece	12.5x
Field of view	38.5, 22.2, 15.2, 10.5 & 6.7 mm respectively
Interpupillary adjust	55mm- 80 mm



HT-5000
APPLANTATION TONOMETER
SPECIFICATION

HS-5000

HUVITZ SLIT-LAMP/
IMAGE MANAGEMENT SYSTEM



Exclusively Marketed in India by " **JAGGI BROTHERS**
6/6 VISION ON TECHNOLOGY
Jaggi
Plot 111, Udyog Vihar 6, Sector 37, HSIDC Industrial Area,
Gurgaon, Haryana - 122005 (India)
Phone : 0124-4281834, 8800628282
E-mail : sales@jaggi.com Website : www.jaggi.com

Huvitz
Pacing Progress toward People
www.huvitz.com

Huvitz
Pacing Progress toward People

6/6 VISION ON TECHNOLOGY
Jaggi

ILLUMINATION

The 12v /30w high illuminance halogen lamp provides incredible clarity for both the microscope and the imaging system.



DIGITAL CAMERA

The HS 5000 series is easily compatible with the HIS 5000 10MP Inbuilt camera system. The integrated camera frees up a lot of space above the microscope for user manipulation. Optionally the Canon DSLR system can also be incorporated. The EOS series DLSR gives a minimum of 18 MP resolution with the advantage of a smaller magnification and larger field of view as compared to the conventional Digital Cameras. Video as well as Single Shot captures can be archived.



INTEGRATED CONTROL

The integrated Omni Style Joystick is simple to control. The Trigger button is conveniently located on top of the joystick for easy image and video capture. The Intensity control is conveniently located on the base which relieves the user's second hand for manipulation.



MICROSCOPE

With the global Standard Galileian Converging Binocular type optical system, the Huvitz High End Slit-Lamp series a wider angle, increased resolution and crisp and sharp images. The Huvitz Range offers two types of Microscopes :

HS 5000 3 Step – 12.5x eye-pieces / 10x, 16x and 25 x magnifications
HS 5000 5 Step – 12.5 x eye-pieces / 6x,10x,16x, 25x and 40x magnifications.

YELLOW FILTER



Enhanced clinical diagnosis with wide range of filters
Ergonomic yellow fluorescein filter A yellow filter is conveniently located near the ocular for effortless insertion of fluorescein pattern. (Filters : Cobalt Blue, Red-Free, Grey, Heat Absorption, Yellow)

HIS 5000 ARCHIVAL SYSTEM

The MS access Database system allows the user to search and easily manage the diagnosed information, data and history of patients. The Archival system allows you to sort using the pathology. The Real time image saving feature ensures the perfect frame of capture. The captured images can display / export images in all formats such as JPG,TIFF,RAW and many more formats. The archival system also allows the captured image to be adjusted for brightness, contrast, sharpness, inversion etc.



QUICK IMAGE SAVING

Real time quick image saving High performance progressive scan CCD camera provides quick image capture of diagnosed images in real time.

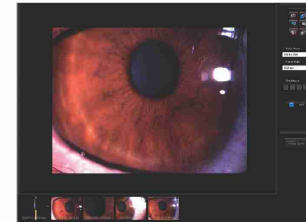
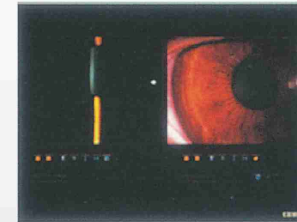


IMAGE MANIPULATION

Captured images can be compared to previous images, Overlaid over existing images, Used as a slide-Show or reference.



REPORT

Selected images can either be printed on a page or exported via email or electronic format for patient records.

HT 5000

Applanation Tonometer (Optional)

The world standard Goldman Applanation tonometer with a Digital Readout. Readings are easily read in even in a dark room. The Optimised Algorithm in the HT 5000 makes the readouts much faster. The power supply for the digital readout is using conventional AAA batteries. The slanted display angle allows an ergonomic view angle for the user.

Specifications as per the given table. In the brochure.

