



# ULTRASOUND

**A-SCAN / B-SCAN / PACHYMETRY**  
SK-2000AP / SK-3000A

## ■ SK-3000A

A-scan, B-scan and Pachymetry, three in one

12.1-Inch large touch screen

Weight of only 3.6kg

Smooth operation experience

Better ultrasound images for clinical use, meet your clinical needs



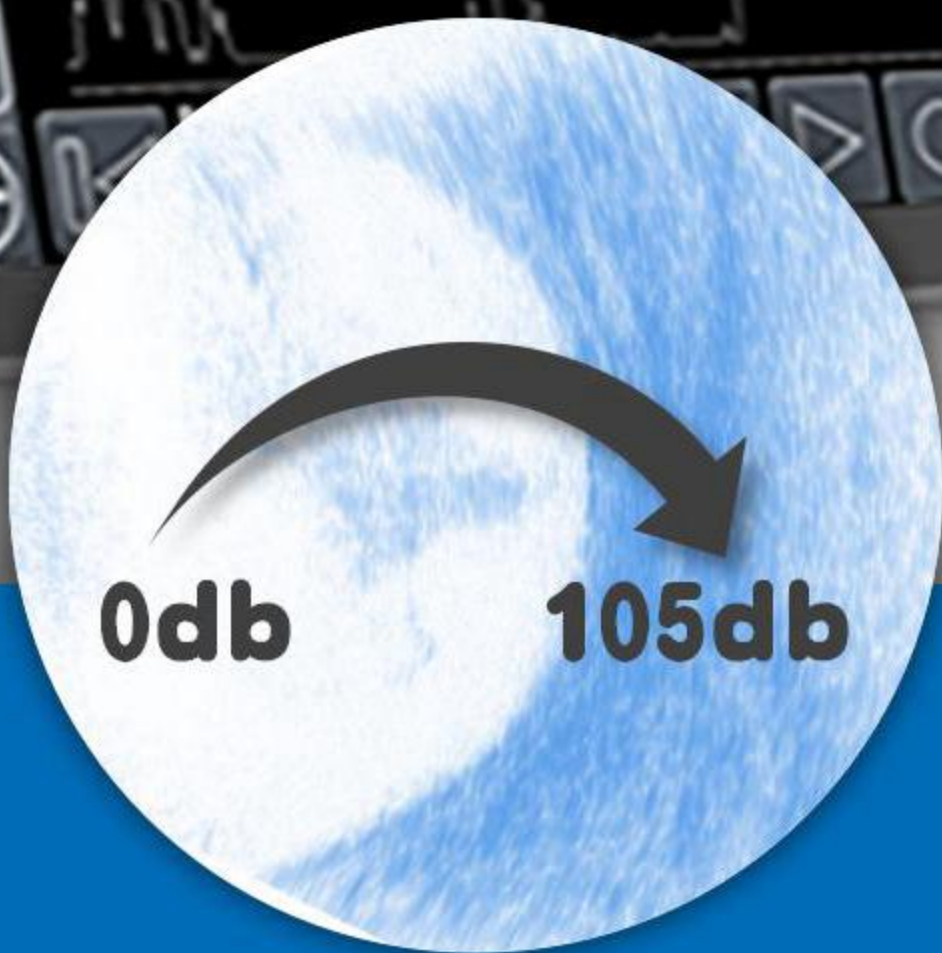
### ■ CLOSED-LOOP MAGNETIC-DRIVEN B ULTRASONIC PROBE

Unique magnetic-driven technology, no noise and low vibration, better operation experience for doctors, more comfortable examination experience for patients

Effectively avoid the abrasion of the moving mechanism caused by the mechanical transmission, greatly extend the probe's service life

Computer would send out instructions to the ultrasonic chip when the set scanning position is sensed by the position sensor, so as to ensure the accuracy of the ultrasonic signal





## **DYNAMIC RANGE ADJUSTMENT**

106 ultrasound images with different gains can be saved in one freezing moment.

Once frozen, lesion images with different gain intensity can be observed. The testing time is shorter and the patient is more comfortable.

Doctor can easily obtain the best resolution ratio. The clearer observation, the more accurate diagnosis which avoids missing subtle lesions.

## **A-SCAN**

Anterior chamber depth, crystal thickness, vitreous length and axial length are accurately calibrated and measured, to provide doctors with more reliable diagnostic basis

## **PACHYMETRY**

P-probe of 20 MHz with higher sensitivity, faster marking speed, and more accurate measurement results based on ten sets of data

## **PC SOFTWARE**

With perfect image processing system, report-editing and report-printing in one

Upload real-time patient data and establish perfect patient database

## **EASY SHARING**

LAN connection, real-time data sharing, faster transmission speed, to achieve longtime diagnosis of patients

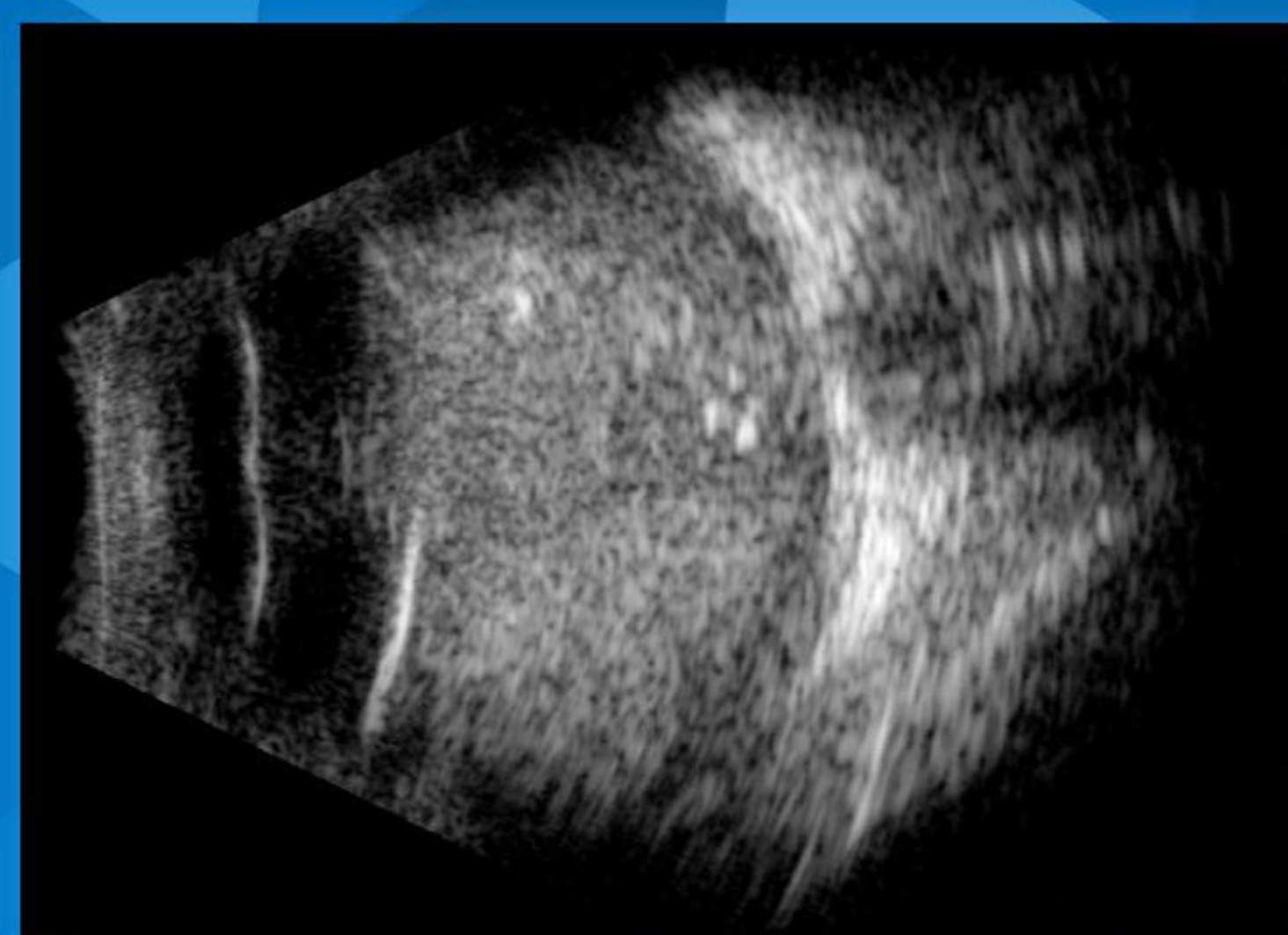
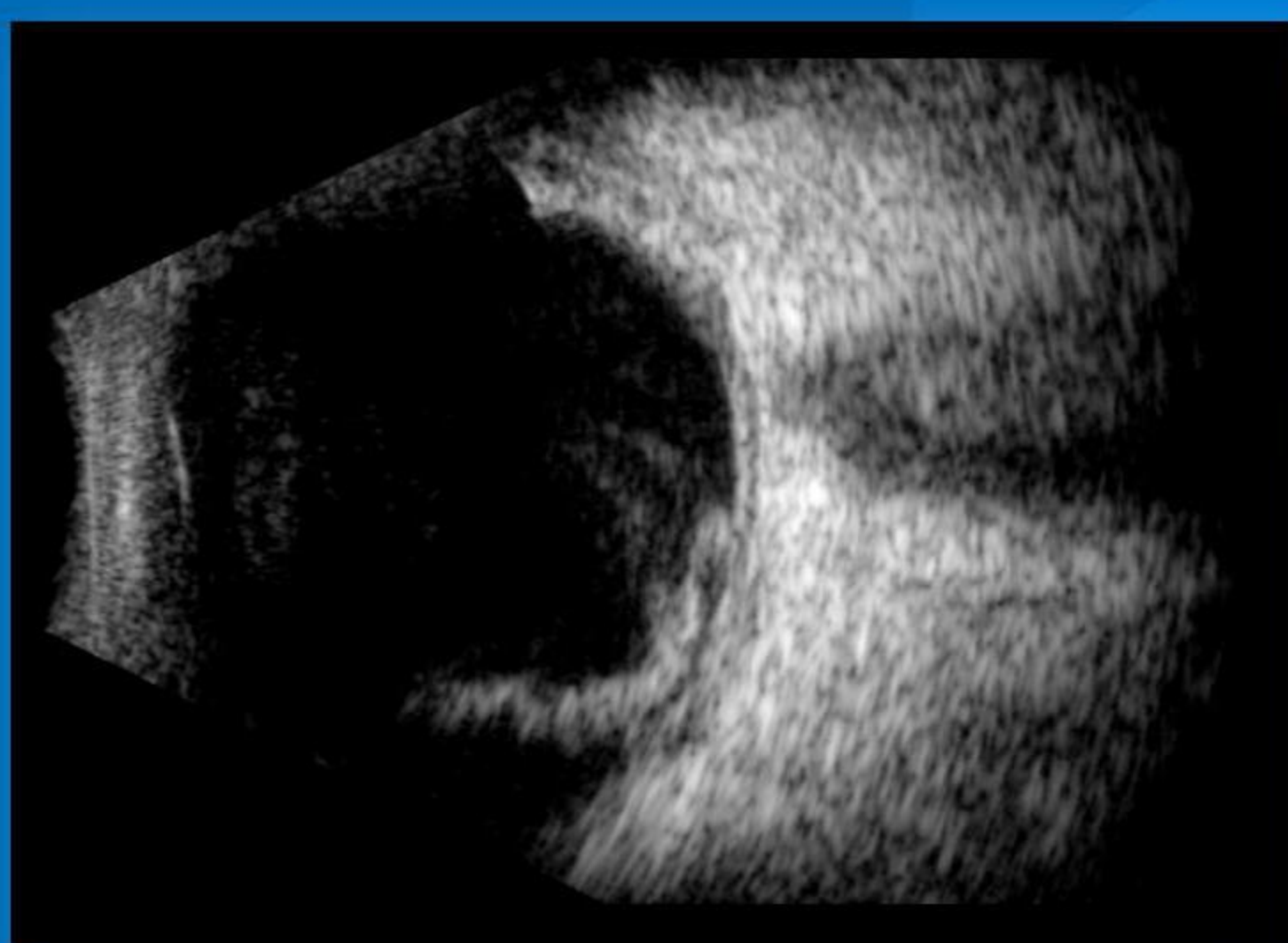
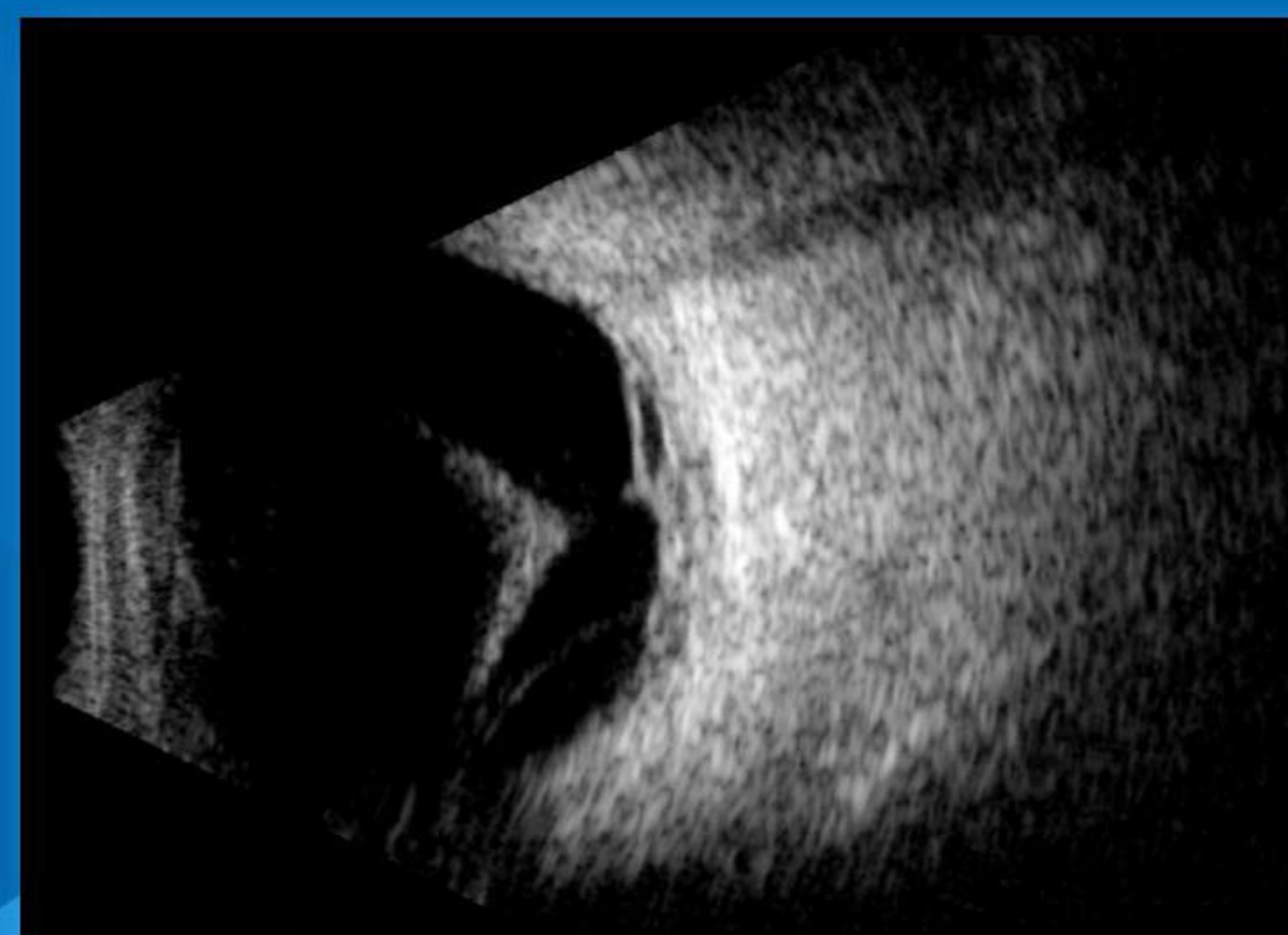
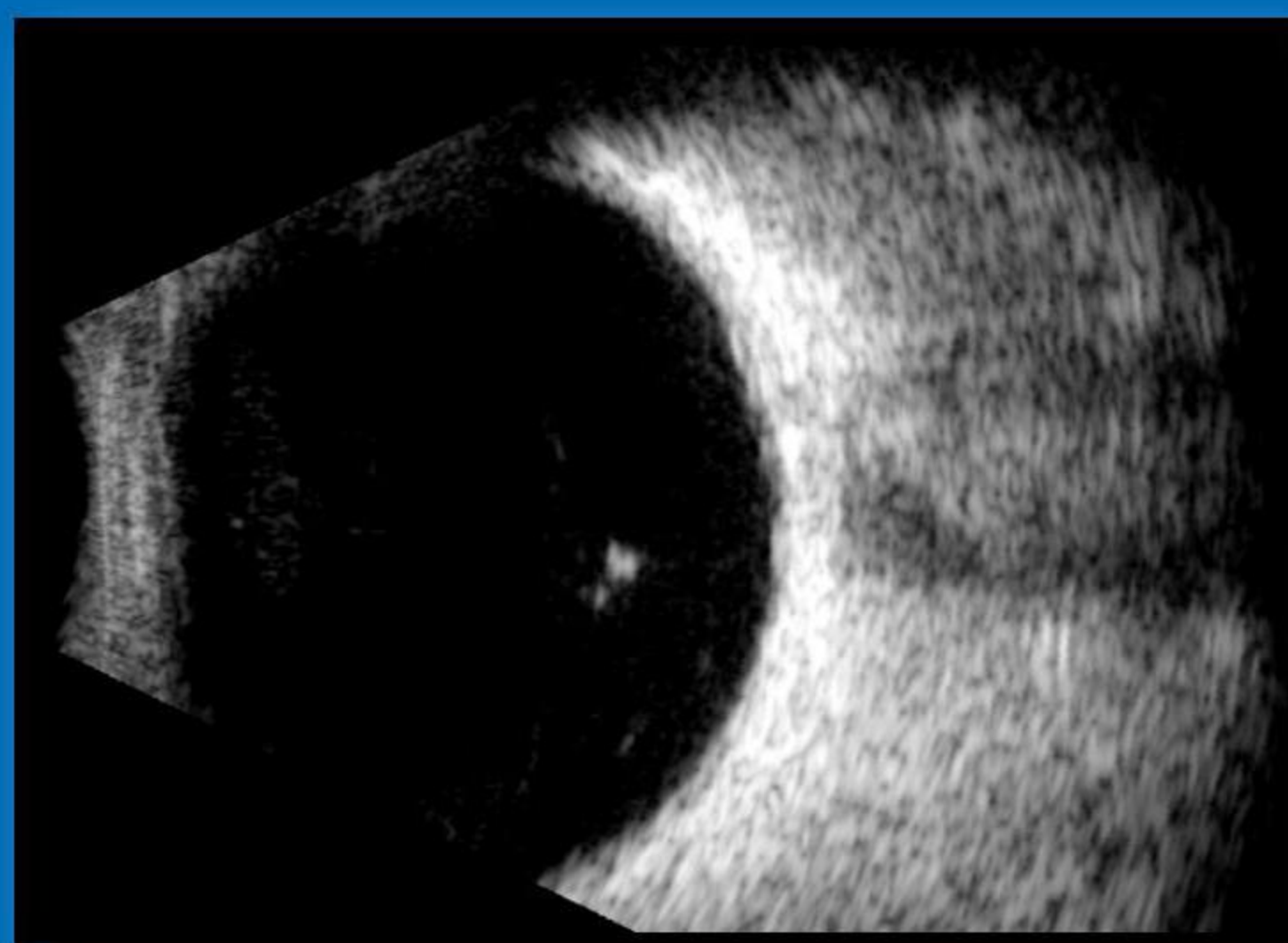
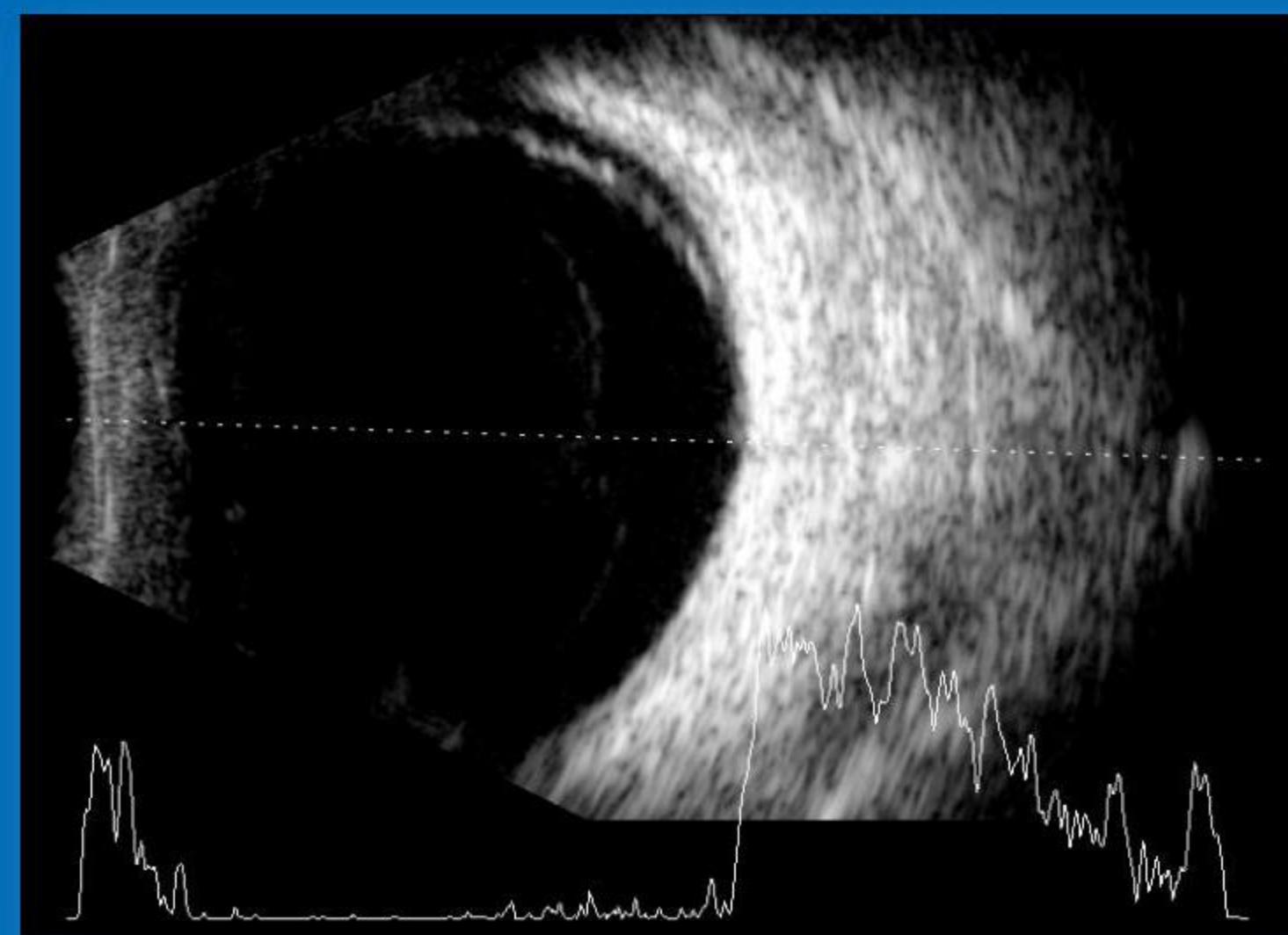
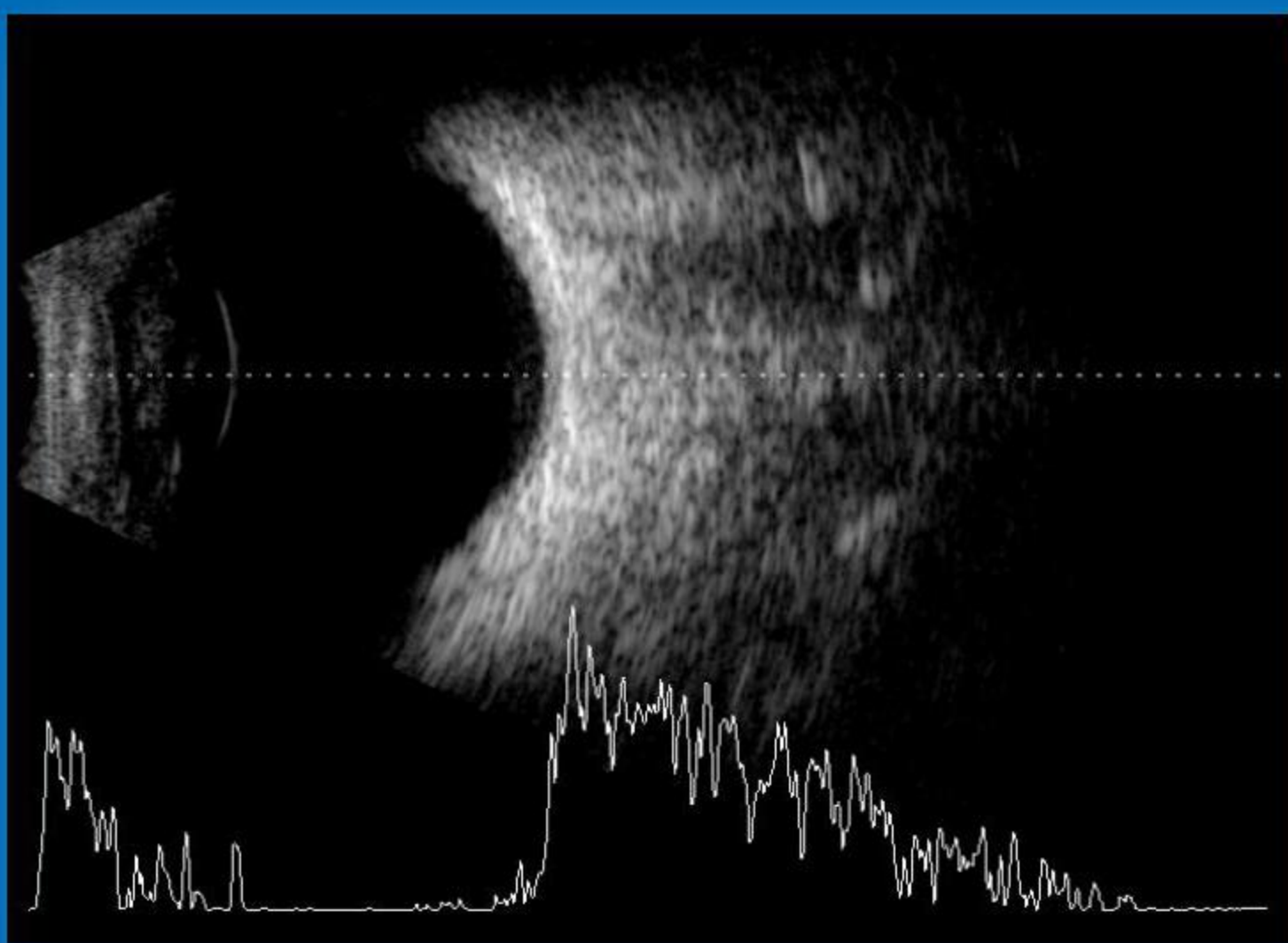
## ■ B-SCAN GALLERY

Unique B-scan probe technology to ensure every detail and to achieve the ultimate clarity

Present high-quality images with clear tissue and pathological structure

With enhancement function of vitreous body, leave out no lesions, ensure high-reliability reports

With closed-loop technology, ensure real-time synchronization of dynamic images and high-accuracy





## ■ SK-2000AP

A-scan and Pachymetry, two in one  
With exquisite and small size  
Faster calibration speed, smoother operation



### ACCURATE A-SCAN

Perfect ultrasonic frequency of 10 MHz, deeper detection depth and higher image resolution



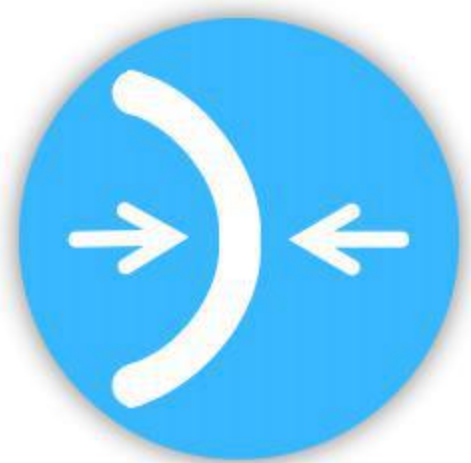
### MULTIPLE MEASUREMENT MODES

Six crystal modes, Automatic and manual methods, meet different clinical needs



### 10 SETS OF OUTPUT DATA

Real-time automatic calibration, average value and standard deviation calculation, more accurate measurement results



### ACCURATE PACHYMETRY

High-Frequency of 20MHz to ensure measurement accuracy



### 6.5-INCH COLORFUL TOUCH SCREEN



### BUILT-IN THERMAL PRINTER

# TECHNICAL PARAMETER

## SK-2000AP A-Scan and Pachymetry

### A-Scan

Frequency: 10MHz

Accuracy:  $\leq 0.05\text{mm}$

Depth: 0 - 40mm

IOL Calculation: SRK-II, SRK-T, Binkhorst II, Hoffer Q, Holladay, Haigis

Eye Mode: Phakic, Dense, Aphakic, PMMA, Silicone, Acrylic, 3 Customized Modes

Calibration Mode: Automatic and Manual

Measurement Method: Immersion or Contact

### Pachymetry

Frequency: 20MHz

Accuracy:  $\leq 5\mu\text{m}$

Depth: 0.15mm-1.5mm

Measurement Method: Contact

### Other Parameter

Gain: 0-99db

Touch Screen: 6.5 Inch Color

Display Resolution:  $\leq 0.1\text{mm}$

Output Information: 10-group Data, Average & Standard Deviation Calculation

Storage: 200 Copies Exam Data

Print: Built-in Fast Thermal Printer

## SK-3000A A-Scan, B-Scan and Pachymetry

### B-Scan

Frequency: 10MHz

Scan Mode: Closed-loop Magnetic-driven

Gray Levels: 256

Adjustable Gain: 0-105db

Dynamic Range Adjustment: 0-105db

Depth: 40mm, 60mm

Detection Angle:  $53^\circ$

Image Freezing: 50 pcs

Foot-switch: Freeze, Release and Save

Resolution: Axial  $\leq 0.2\text{mm}$ , Lateral:  $\leq 0.4\text{mm}$

Display Mode: B, B+A

Playback: 150 Frame Playback and Screenshot

### A-Scan

Frequency: 10MHz

Measurement Range: 0 - 40mm

Accuracy:  $\leq 0.05\text{mm}$

Eye Mode: 7 Different Modes and 5 Customized Modes

IOL Calculation: 6 Common Methods + 2 Post-Refractive Methods

Statistical Calculations: Average & Standard Deviation

### Pachymetry

Frequency: 20MHz

Accuracy:  $\leq 5\mu\text{m}$

Depth: 0.15mm-1.5mm

### Other Parameter

Computer: Special Embedded System, 12.1 Inch Touch Screen

Image Processing: length and angle measurement, point and area marking, contrast and sharpness adjustment

Printer Support: HP Regular Printer



**ChongQing SunKingdom Medical Instrument Co., Ltd.**

URL: [en.cqsunkingdom.com](http://en.cqsunkingdom.com)

E-mail: [sales@cqsunkingdom.com](mailto:sales@cqsunkingdom.com) Tel: +86 23 68643990

Add: Room 12, Floor 10, Block A of China Resource Center.

Jiulongpo District, Chongqing 400050, China.