

Huvitz

HRK-1



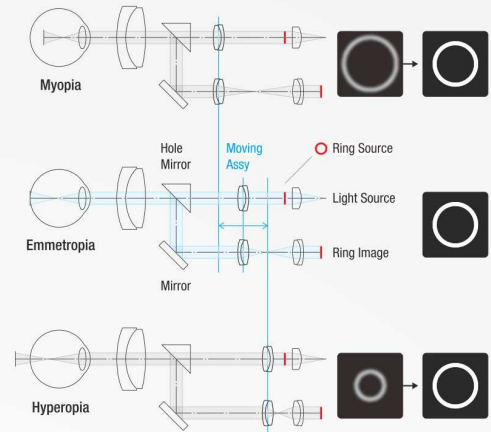
Equipped with the Smart Assembly Moving Control Technology (SAMC)
the HRK -1 Autorefractometer gives an even faster and more accurate readings.

Huvitz's Smart Assembly Moving Control Technology

The virtual Aiming dot enabled GUI guides the optical system to the correct positioning on the retina automatically to ensure a stable signal response resulting in a much faster and accurate reading. This SAMC tech also improves the effect of uneven light reflection in cataract eyes.

Simple Up and Down Auto Tracking.

The auto tracking takes control of the 2D movements to ensure a fast positioning without having to rotate the joystick.



Color Camera

Full color camera and White LED light enables the user to display the images on any external monitor. Using the HRK mate software the print outs can be obtained. The Built-in filters for Red- Free and Cobalt blue allow greater versatility to the user and enhancing the patient experience.

Intuitive White to white and Scotopic Pupil diameter measurement

The White to white (upto 14mm) and the scotopic pupil diameter can be measured with the HRK -1 further enhancing the practitioner experience.

Retro-Illumination Mode

The media opacity can be clearly viewed / captured on screen, enhancing the patient experience. In addition to this the refractive measurements can also be obtained in cases where normal refraction was not possible. This unique features allows the assessment of the Pre-operative refractive status where all conventional methods have failed.

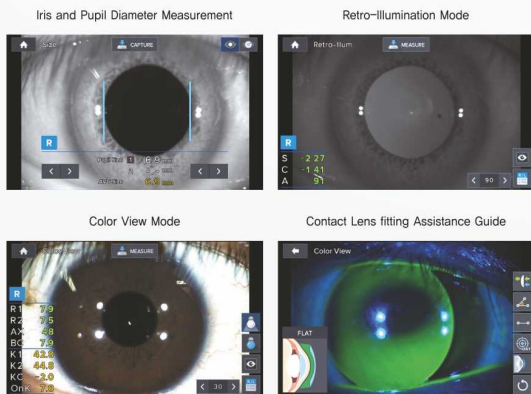
7" Touch-screen / High speed printer

The Color touch-screen TFT LCD provides a high quality image to the user. The thermal printer allows fast printouts. If coupled with the Huvitz Lensmeters, one printout can be obtained for the autorefractometer and the lensmeter readings.

Specifications

Measurement Mode	K/R Mode	Continuous Keratometry & Refractometry
	REF Mode	Refractometry
	KER Mode	Keratometry
	Color View Mode	Color View & Contact Lens Fitting Assistance (White & Blue LED Light)
Refractometry	Vertex Distance (VD)	0.0, 12.0, 13.75, 15.0
	Sphere (SPH)	-30.00~+25.00D (VD=12mm) (Increments : 0.01, 0.12, 0.25D)
	Cylinder (CYL)	0.00~±12.00D (Increments : 0.01, 0.12, 0.25D)
	Axis (AX)	0~180° (1° unit)
	Astigmatism Indication	-, +, ± (Mixed)
	Pupil Distance (PD)	10~85mm
	Minimum Pupil Diameter	Ø2.0mm
Keratometry	Radius of Curvature	5.0~13.0mm (Increments : 0.01mm)
	Cornea Power	25.96D~67.50D (Increments : 0.05, 0.12, 0.25D) (When cornea equivalent refractive index is 1.3375)
	Cornea Astigmatism	0.00~±15.00D (Increments : 0.05, 0.12, 0.25D)
	Axis	0~180° (Increments : 1°)
	Pupil, Iris Diameter	2.0~14.0mm (Increments : 0.1mm)
	Memory of Data	10 measurements for each eye
	Auto Tracking Distance	Up and down ±15mm
Others	Display	7 inch Wide Color TFT LCD Resistive Touch Panel
	Interface	RS-232C
	Internal Printer	Thermal Line Printer
	Power Supply	100~240VAC, 1.0~0.6A, 50/60Hz
	Dimensions / Weight	261(W) X 513(D) X 433(H)mm / 16kg

Designs and details can be changed without prior notice for the purposes of improvement.



Exclusively Marketed in India by " **JAGGI BROTHERS**

6/6 VISION ON TECHNOLOGY
Jaggi

Plot 111, Udyog Vihar 6, Sector 37, HSIDC Industrial Area,
Gurgaon, Haryana - 122005 (India)
Phone : 0124-4281834, 8800628282
E-mail : sales@jaggiaggi.com Website : www.jaggiaggi.com

Huvitz
Pacing Progress toward People
www.huvitz.com